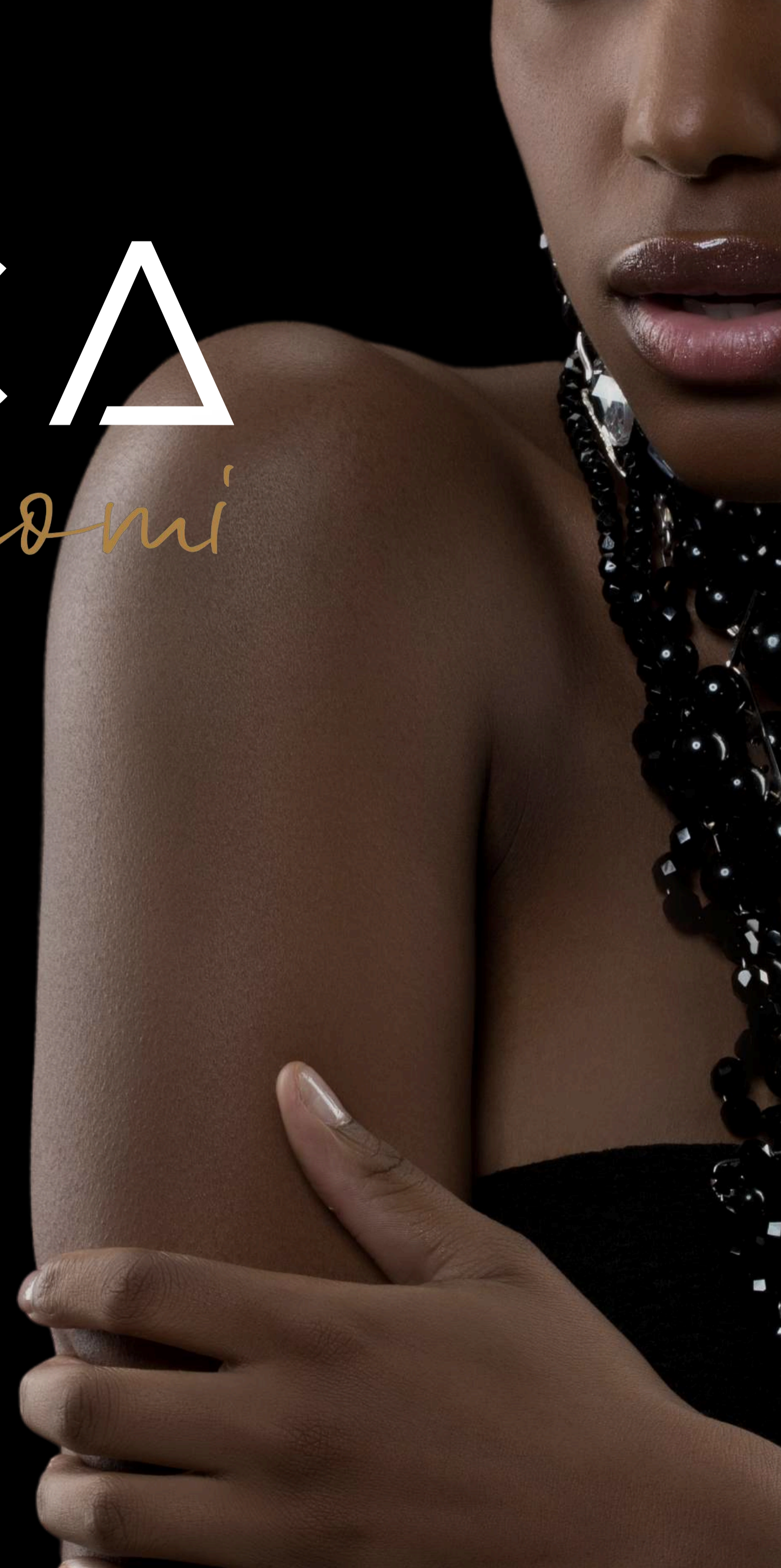


ICONICA

Veroni





THE NEW LINE ICONICA MATT

THE FIRST VERSION IS: NAOMI
TOTAL BLACK WITH SATIN FINISH

Top-of-the-line features for the newest addition to the Iconica line by Aroma.

The essence of coffee meets the allure of matte design. The new machine from Iconica's matte line is a total black masterpiece, perfect for those seeking elegance and impeccable performance. With its curvy lines and soft-touch effect, Naomi transforms every coffee break into a moment of pure style.

ANITA



CHROME LINES

MIRRORED FRONT

GLOSSY PANEL AND
FRAME

FILTER HOLDER PLATE
POLISH

MAHOGANY WOOD KNOB

NAOMI



MATT PAINTED LINES

BRUSHED FRONT

MATTE PANEL AND
FRAME

SATIN-FINISHED FILTER
HOLDER PLATE

BLACK WOOD KNOB
PAINTED

ICONICA NAOMI

STANDARD GROUP

BRASS POD PRESS

HEIGHT : 35 cm

WIDTH : 19.5 cm

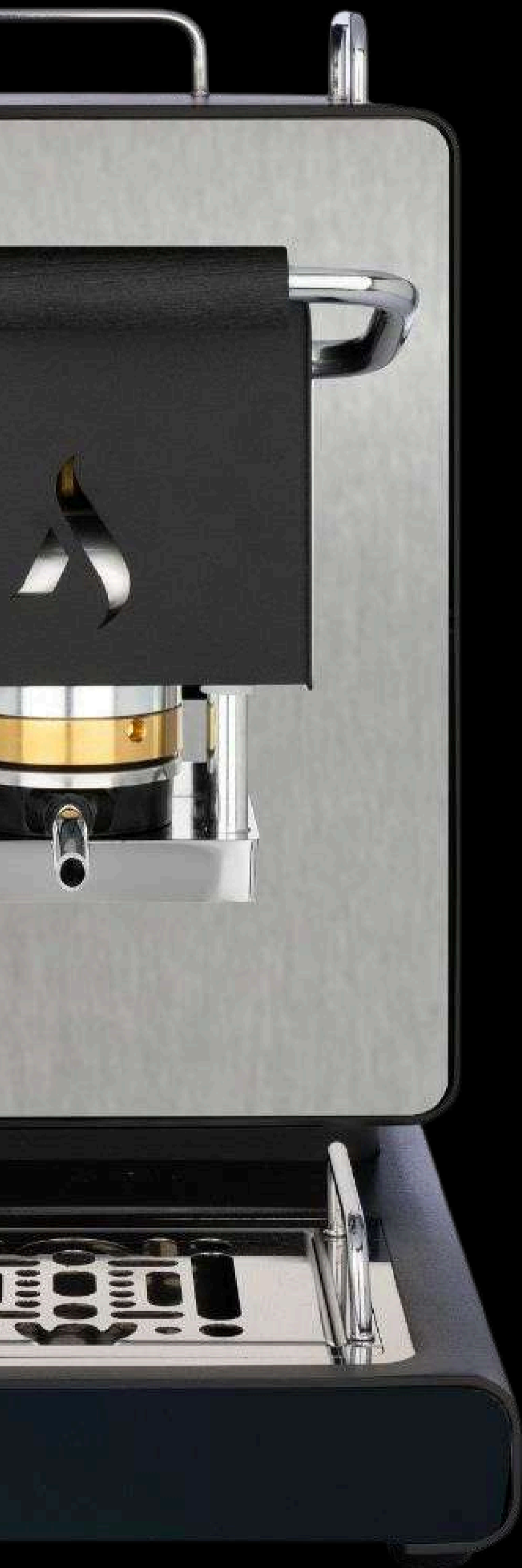
DEPTH : 34.5 cm

WEIGHT : 10 Kg

CAPACITY : 2 lt

PLASTIC TANK





WHAT MAKES NAOMI DIFFERENT

Solenoid valve included

Throughout the Iconica line there is a solenoid valve. A technical element not found in machines of other brands.

Dual function

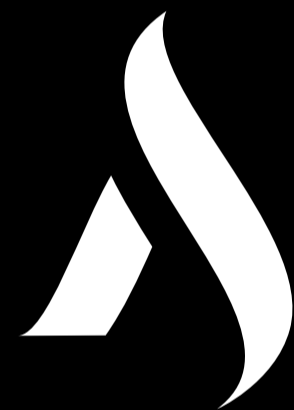
Not only coffee, Iconica is also perfect for making infusions and herbal teas. Moreover, thanks to the included riser, the espresso brewed will not risk any thermal shock.

10 kg of quality

Solid and built with quality materials. Just think that other machines on the market weigh less than 4 kg!

Drain into tray

A system that saves a great deal of water, as that which is not dispensed will not be discharged into the basin but reused in subsequent dispensing.



AROMA
MACCHINE DA CAFFÈ

Camar srls
via Matteotti 107
Frignano 81030 (Ce)

SEDE OPERATIVA

+ 39 081 19184834

Viale Salvo D'Acquisto

+ 39 3297765724

zona PIP San Marcellino

p.iva 04291430611

Trentola Ducenta (CE) 81038

info@macchinearoma.com

www.macchinearoma.com

